

Kvikguide

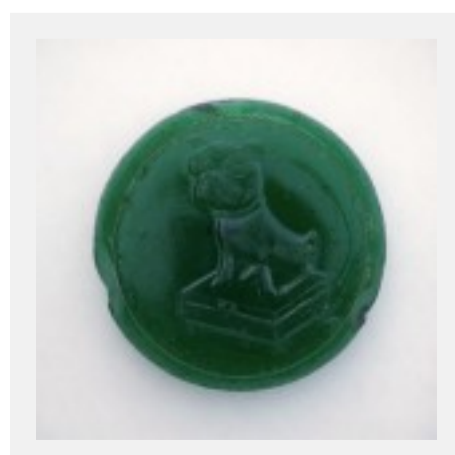
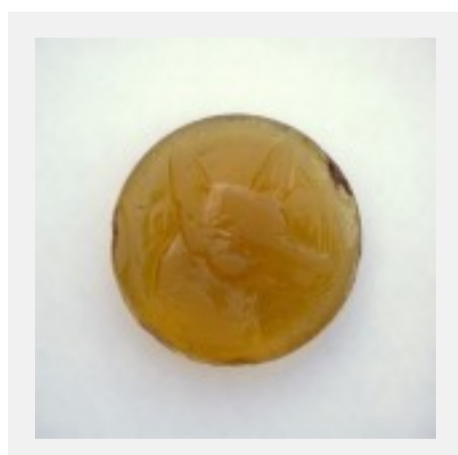
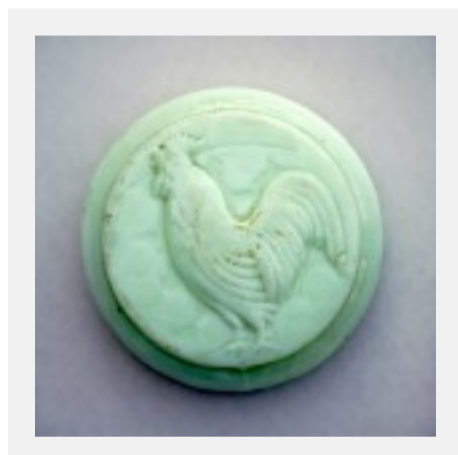
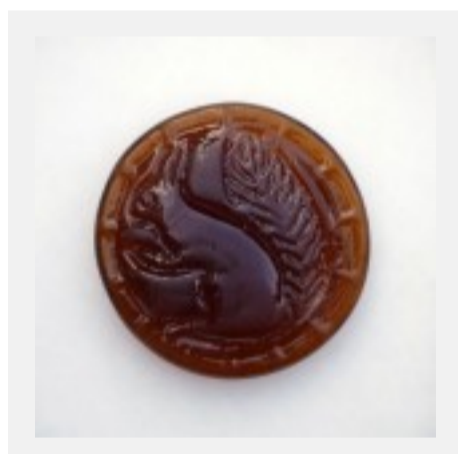
Her kan du nemt identificere de mest almindeligt forekommende danske hinkesten.

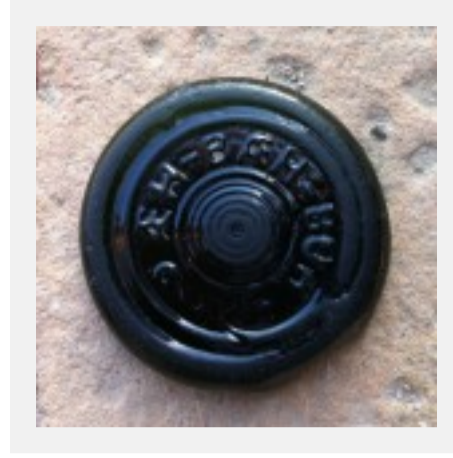
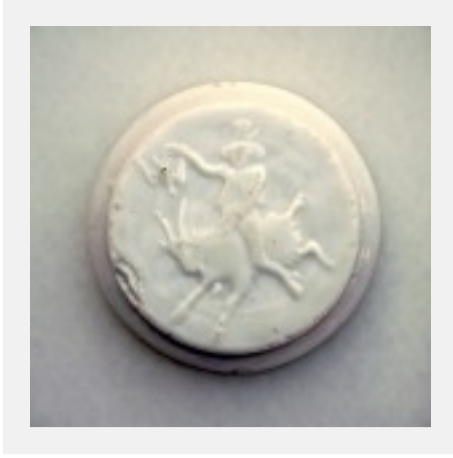
Vil du vide mere om stenen eller producenten, må du i hovedmenuen gå til fanen med de enkelte glasværker.

Nederst på siden kan du også finde få eksempler på udenlandske sten – så kan du selv bedømme kvaliteten i forhold til de danske.

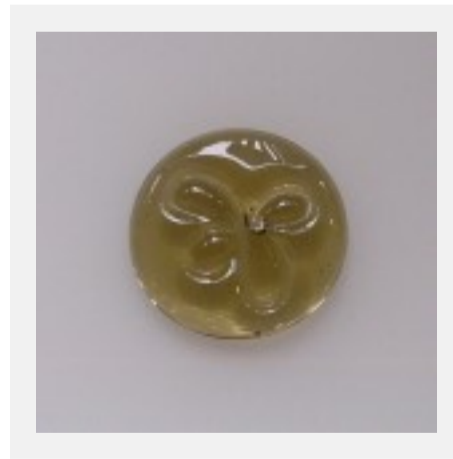
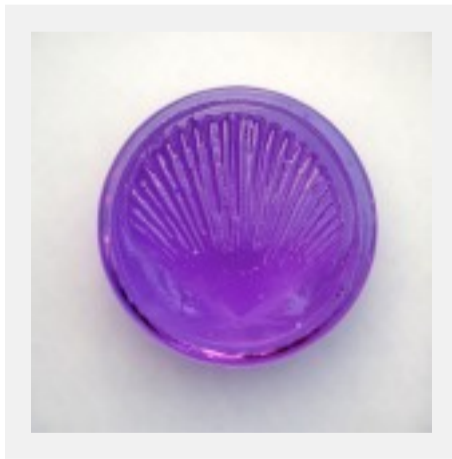
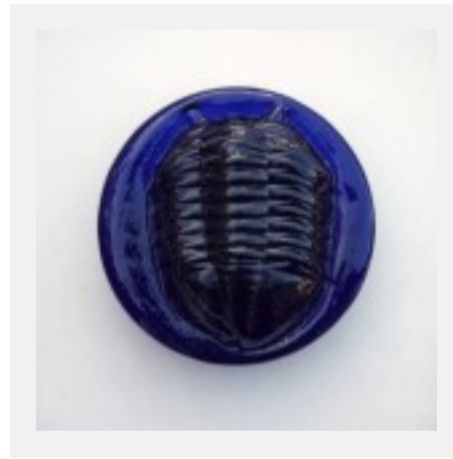
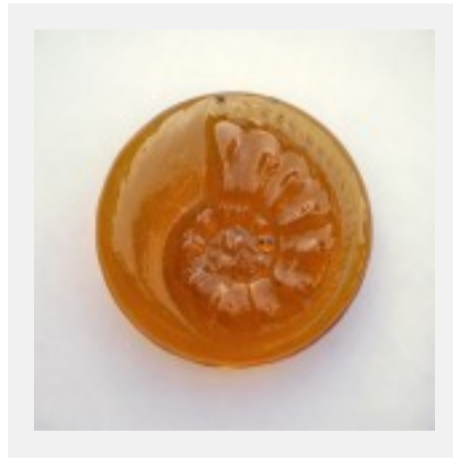
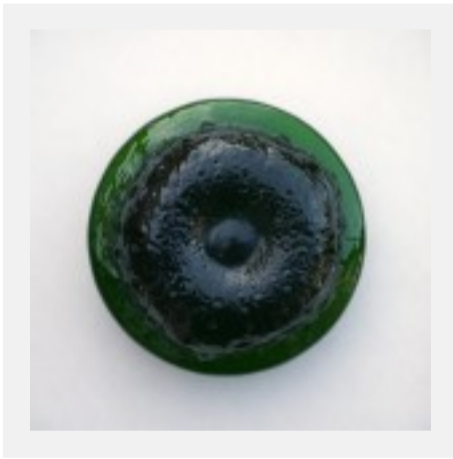
Klik på det enkelte billede for at se det i fuld størrelse og for at se tekst og årstal.

Fyens Glasværk:





Holmegaard Glasværk:



Hammer Glasværk:

